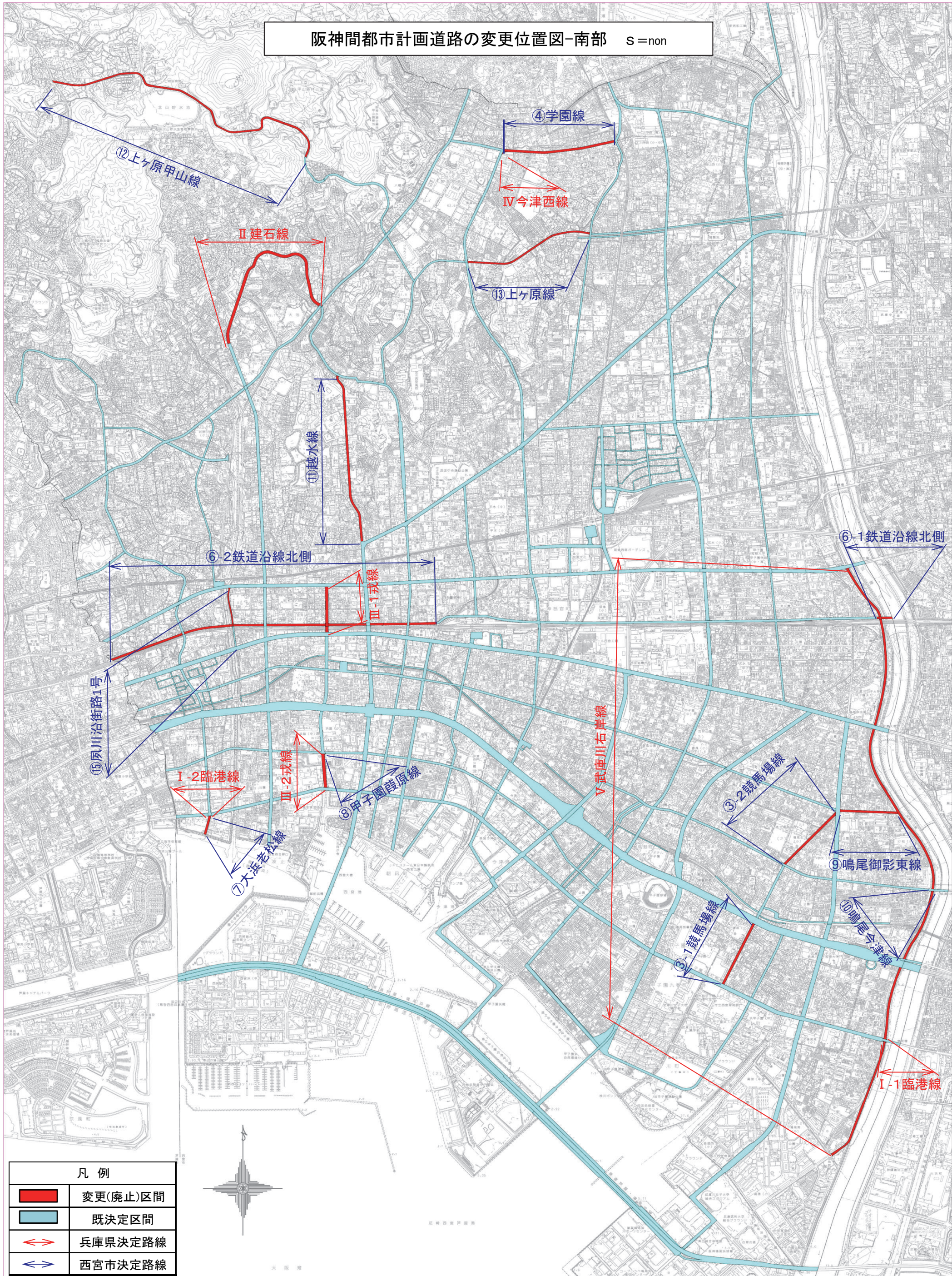
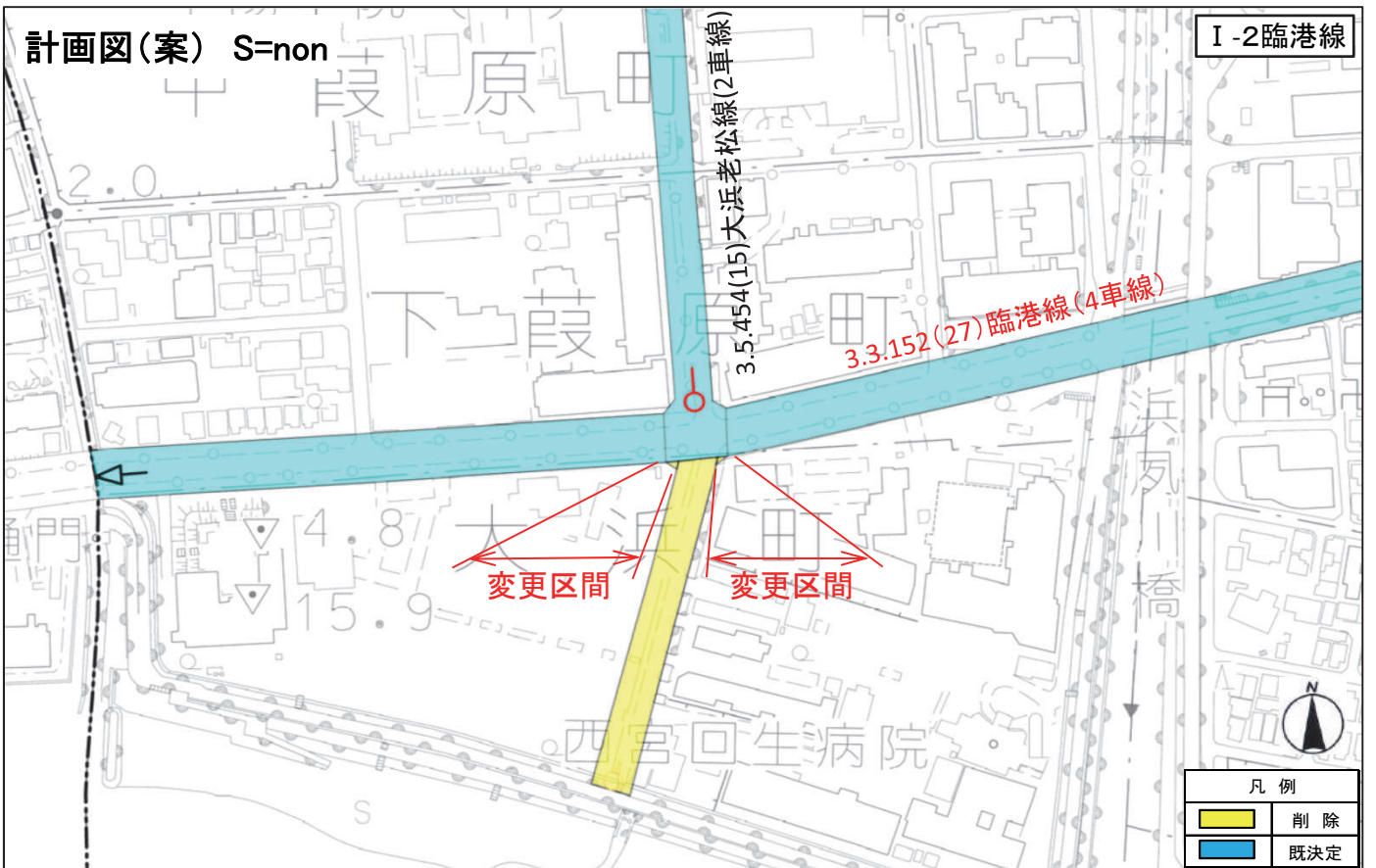
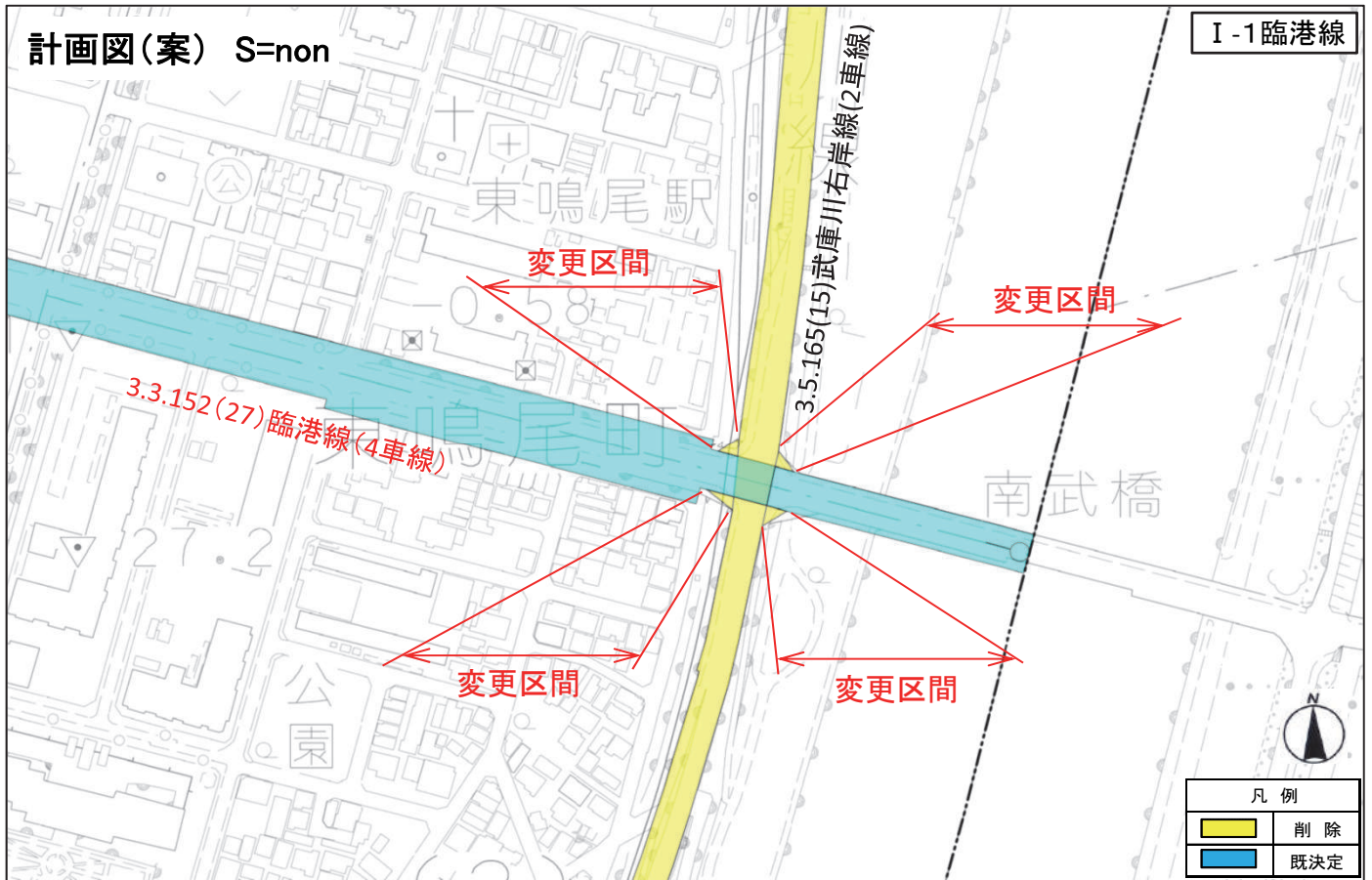


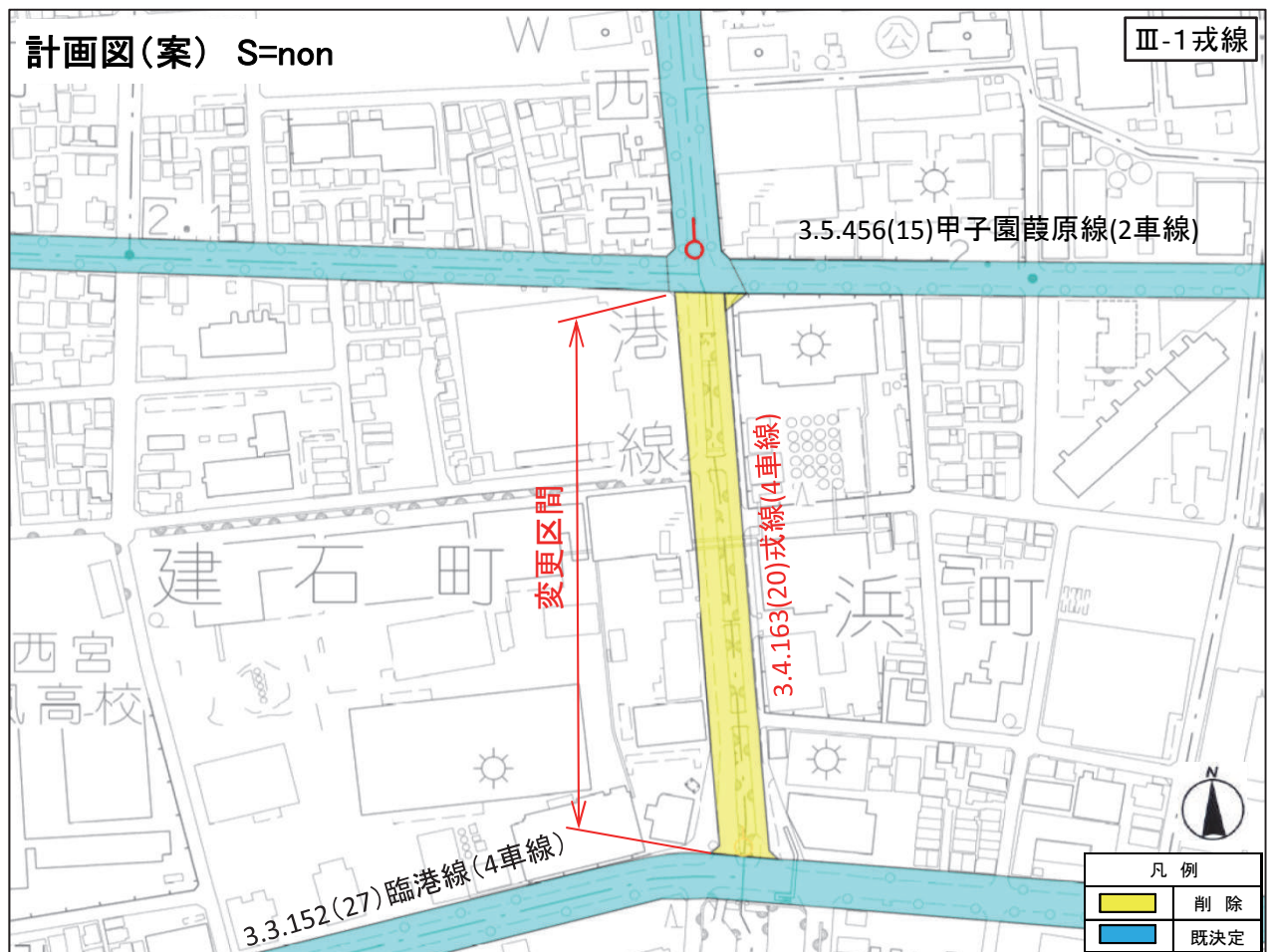
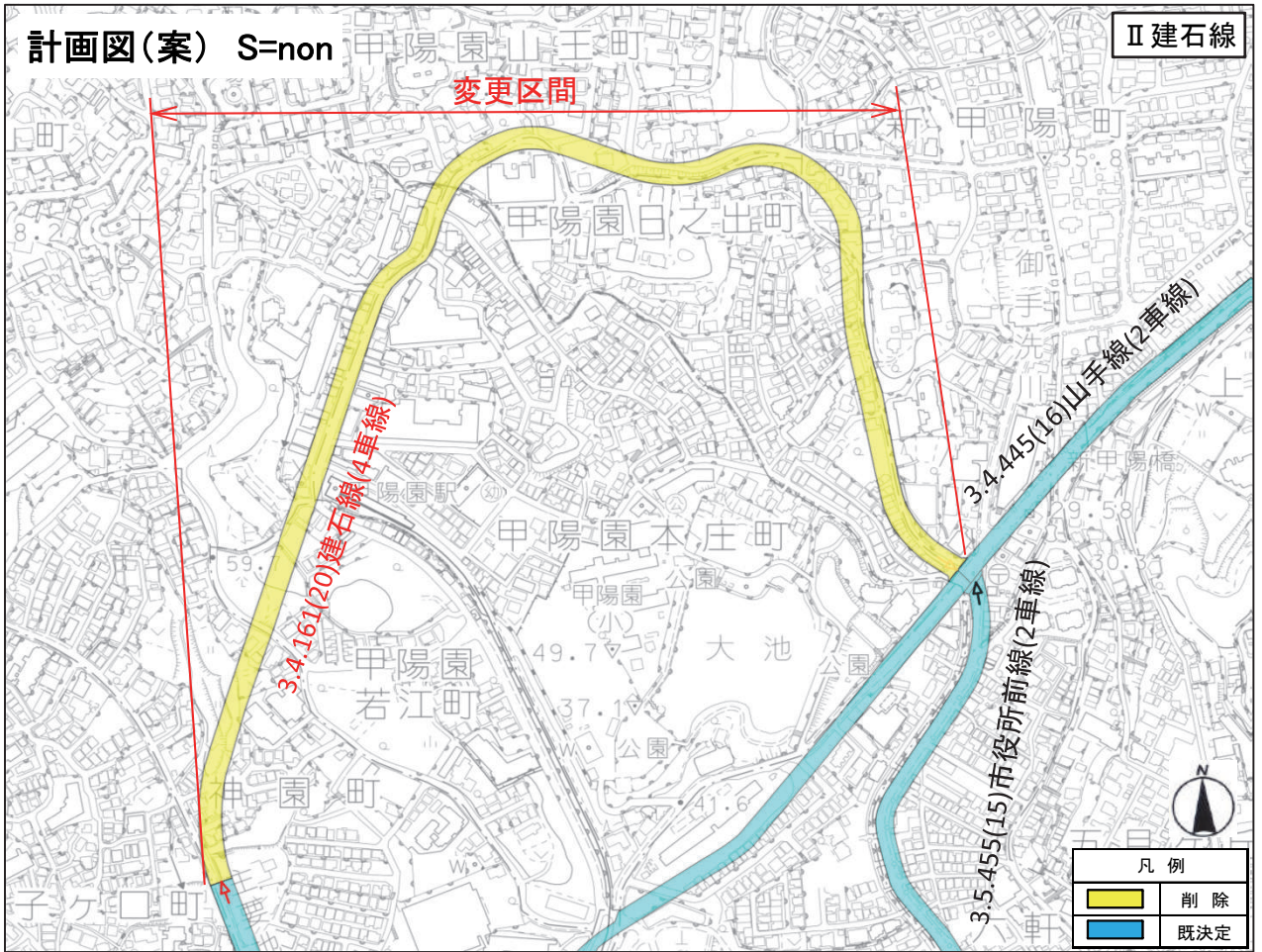
阪神間都市計画道路の変更位置図-南部 S=non

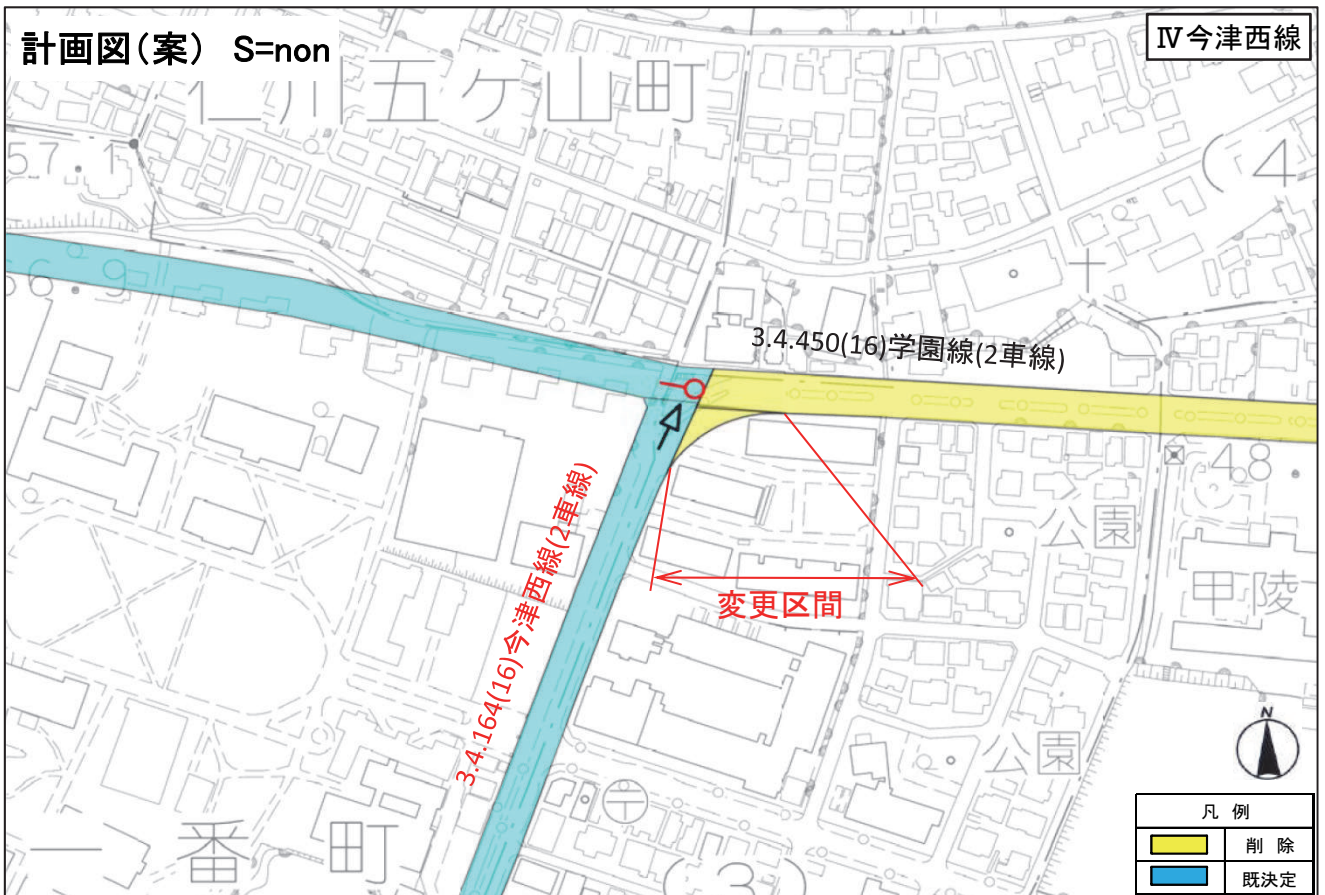
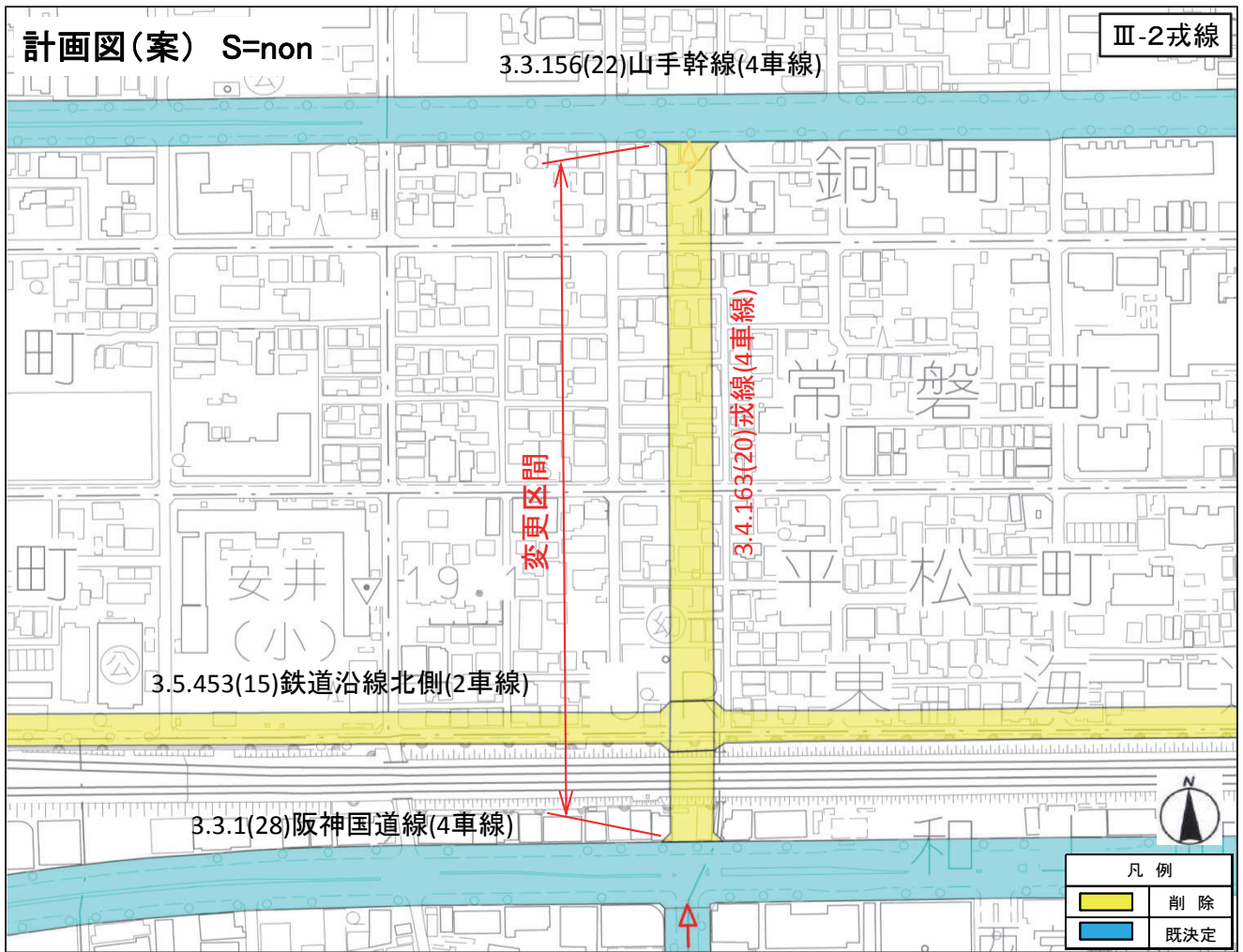


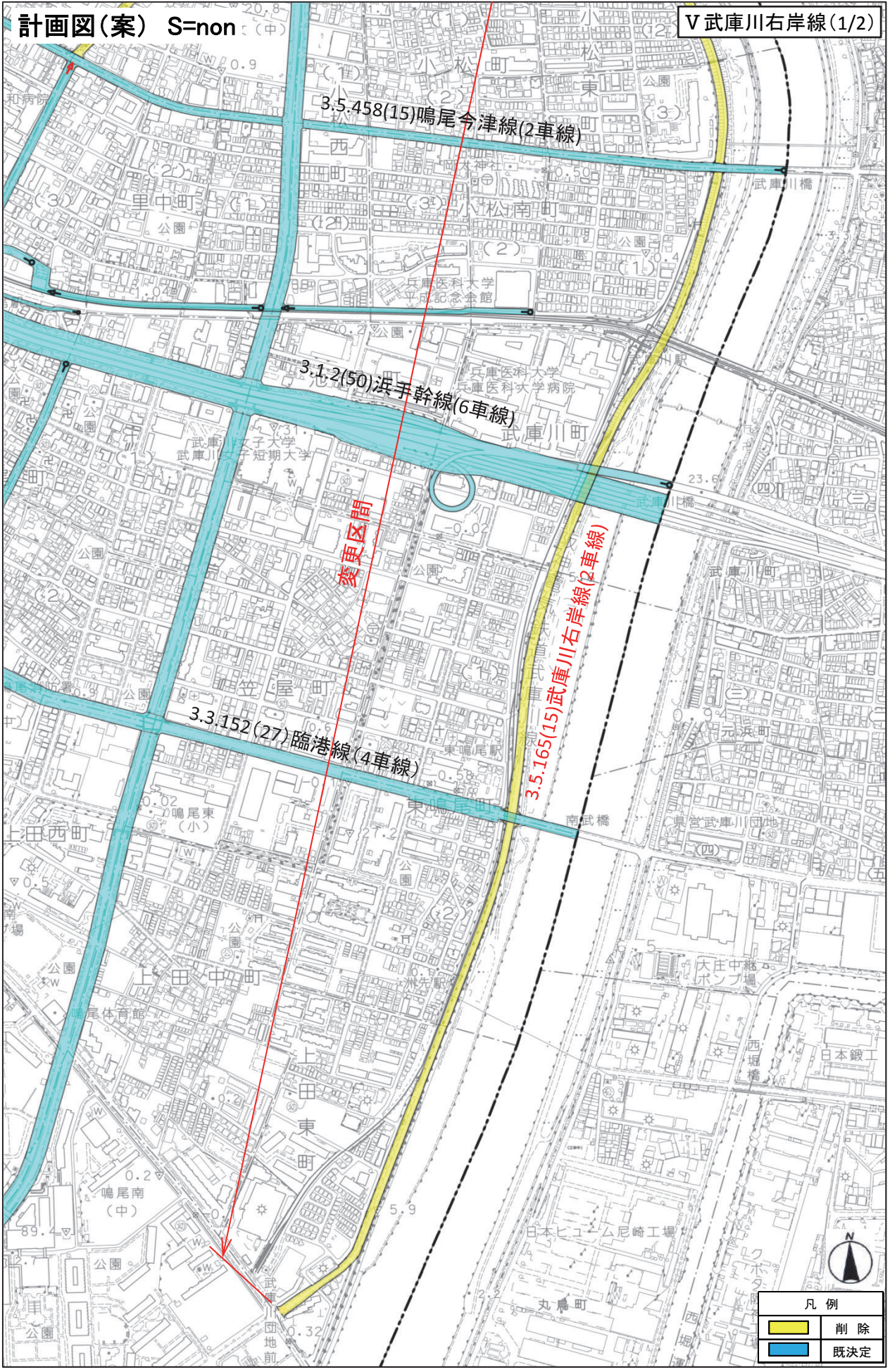
| 凡例   |          |
|--|----------|
| <span style="display:inline-block; width:15px; height:10px; background-color:red; border:1px solid black;"></span>       | 変更(廃止)区間 |
| <span style="display:inline-block; width:15px; height:10px; background-color:lightblue; border:1px solid black;"></span> | 既決定区間    |
| <span style="display:inline-block; width:15px; height:10px; border-top:1px dashed red;"></span>                          | 兵庫県決定路線  |
| <span style="display:inline-block; width:15px; height:10px; border-top:1px dashed blue;"></span>                         | 西宮市決定路線  |











変更区間

3.5.165(15)武庫川右岸線(2車線)

3.5.458(15)鳴尾今津線(2車線)

3.1.2(50)浜手幹線(6車線)

3.3.152(27)臨港線(4車線)

| 凡例  |     |
|---|-----|
| <span style="background-color: yellow; border: 1px solid black; display: inline-block; width: 15px; height: 10px;"></span>    | 削除  |
| <span style="background-color: lightblue; border: 1px solid black; display: inline-block; width: 15px; height: 10px;"></span> | 既決定 |



計画図(案) S=non

V 武庫川右岸線(2/2)

